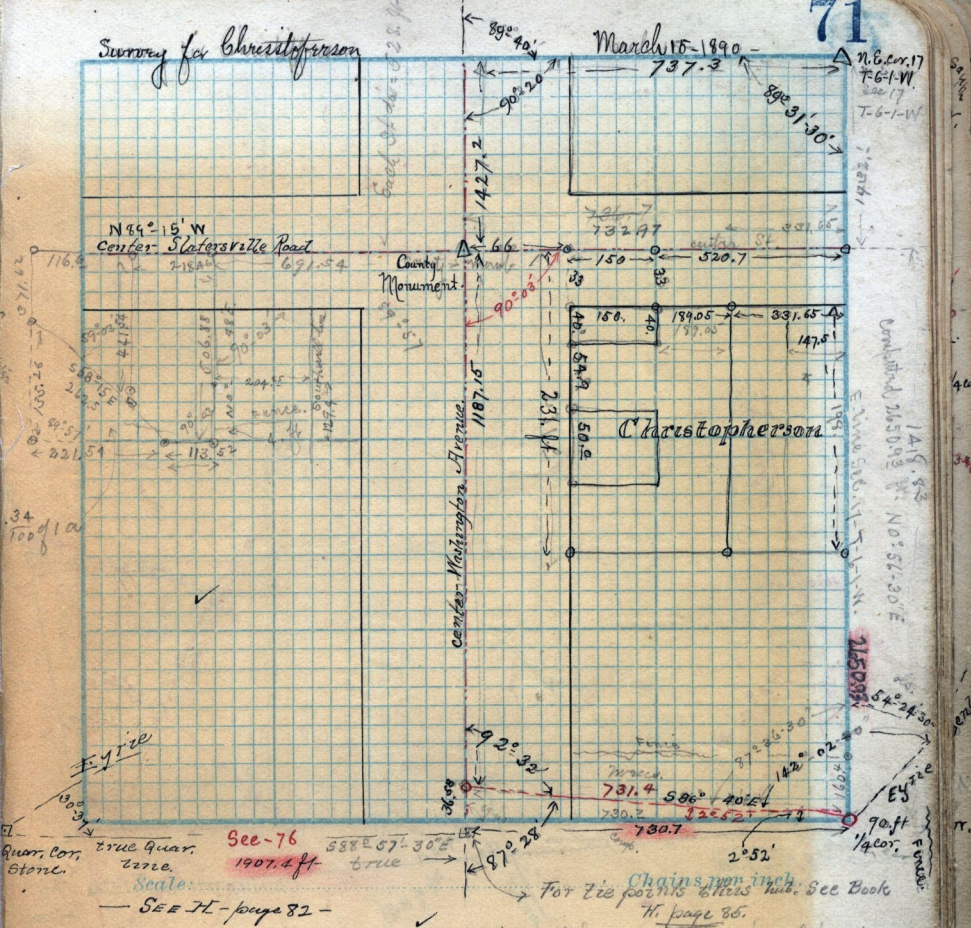


Survey for Christopherson

March 15 - 1890

7
N.E. cor. 17
T-6-1-W.
Sec. 17
T-6-1-W



Sec-76
1907.2 ft true

Scale:

SEE PL - page 82

For tie points others sub. See Book
N. page 86.

* Hence to be conveyed in his lease for Estates Christopherson to Christina
Christopherson and
Peterson his wife in consideration of all the
improvements which may be ^{made or hereafter} put upon said premises

Copy of deed from E. Gilson to W^o Hall, Nov. 19 - 1883 - Q 304. Pt N.E. 1/4 Sec 17
Tp. 6-N. R. 1-W. Bsq. 21.69 ch S. 21.69 W. from N.E. cor. thence N 3.31 ch S 6.69 ch
S 56 1/4 E 1.98 ch. E 1.72 ch. N 76° ch to beg. 2.40 a.
Cp. E. Gilson to Augustus Anderson, 3rd Dec. 1883 Q 322. Pt N.E. 1/4 Sec 17
T-6-N. R. 1-W, Bsq. 21.69 ch. S. 24.95 ch W. from N.E. cor. N 3.85 ch S 5 1/2 E
4.56 ch S 58 1/4 E 4.02 ch. N 6° 69 ch to beg.
Cut off one acre, excluding street, from the East side of last description parallel
to East line